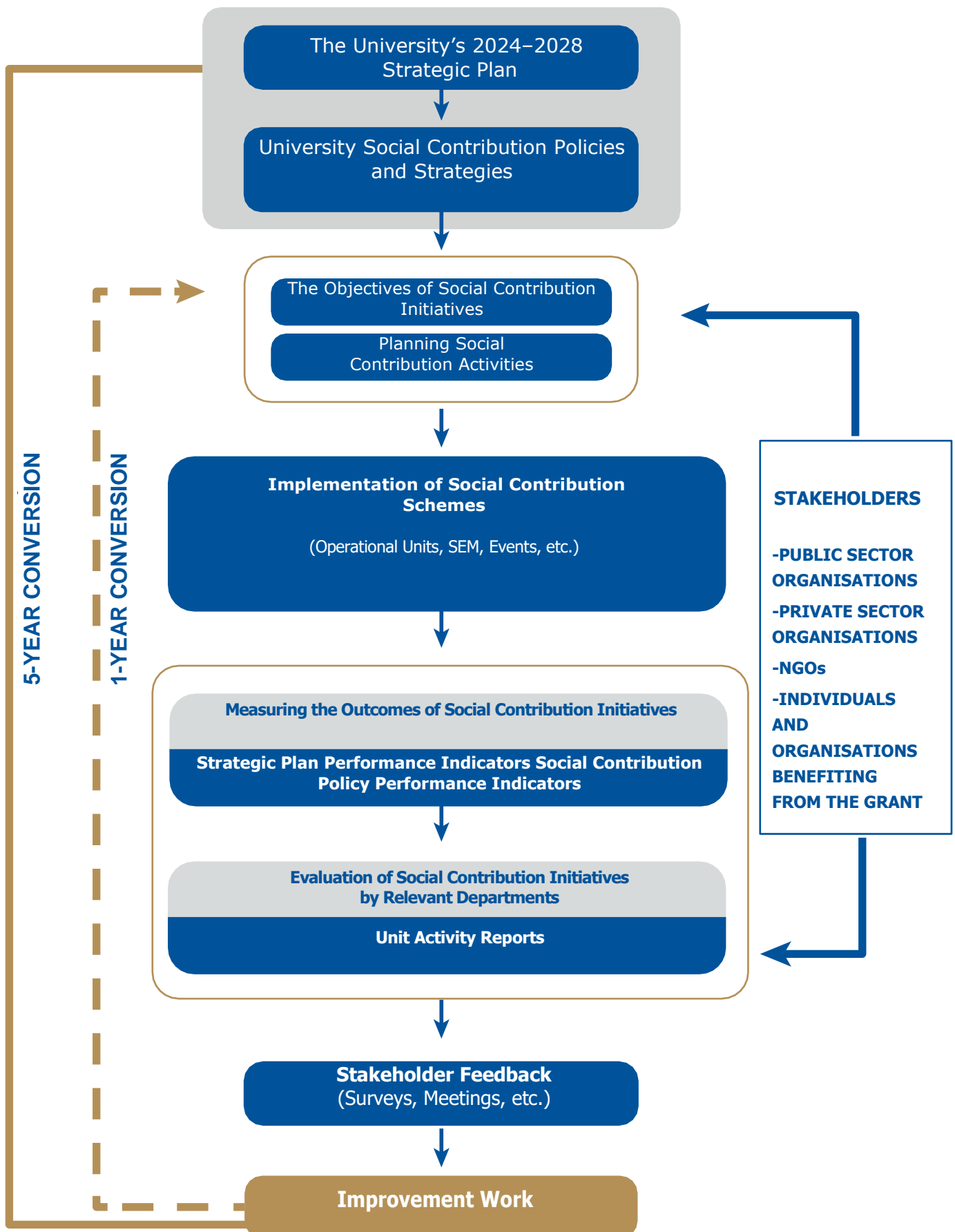


CYPRUS AYDIN UNIVERSITY

SOCIAL CONTRIBUTION PROCESSES: THE PDCA CYCLE



Planning: The planning of the University's community engagement processes is carried out by senior management, the Community Engagement Coordinator, faculties, institutes, vocational schools, and research and application centers, based on the Strategic Plan and Community Engagement Policies. During the planning phase, the views of internal and external stakeholders are taken into consideration.

Implementation: The plans related to community engagement processes are implemented by senior management and relevant units. These plans are designed to address various fields such as health, environment, education, and research and development, as well as different segments of society, including youth, children, women, and the elderly.

Control: Community engagement activities carried out by the University and its units are monitored through unit activity reports and policy performance indicators.

Action: The results of evaluation and monitoring processes are reported to unit administrators and senior management, and necessary improvements are implemented accordingly.